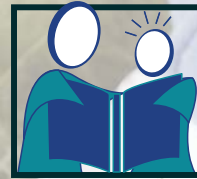




P.O. Box 440549 Kennesaw, GA. 30160



Charter School  
Pro



Charter School  
Pro

from  **THOMCO**  
THOMPSON INSURANCE ENTERPRISES, LLC

Insuring the Security  
of Our Future Generation

# Insuring the Security of Our Future Generation



#1 Insurance  
for Charter  
Schools



Charter School Pro is a comprehensive program for small to medium size schools grades Pre-K to 12.



## Charter School Pro

### Our Charter School Program is Designed to Fit Your Needs!

- Educators Legal Liability
- Abuse Liability
- Worker's Compensation
- Student Accident
- Property
- General Liability
- Automobile
- Umbrella

Let  
**THOMCO**  
Insure  
Your  
Future

Visit our website at [www.thomcoins.com](http://www.thomcoins.com)



You're Committed to give all children a special start in life. That is why we've created Charter School Pro, to protect both the children and your business. Don't just settle for incomplete coverage when you can get a comprehensive package from Thomco that's designed to meet all your needs.

### We Provide Outstanding Coverage and Customer Service For Your Education Business!

Thomco has a thorough knowledge of the needs of the education industry. We have customized our programs to fit the needs of our insureds. We offer the highest level of customer service, with fast turnaround on policy underwriting and claims response.

